



## Flashing Red Lights

AVELAR

Bill Weber, GC,CR,CIEC,CMRS

1

## What is Flashing?

- ◆ It's a *thin layer of waterproof material that keeps water from getting into places it doesn't belong. (Caulk is fine for filling small gaps around windows and doors, but it shouldn't be confused with flashing.)*
- ◆ Flashing carries water safely over the inevitable crevices, cracks and gaps in the building's exterior.
- ◆ Flashing is usually layered with other building materials. The upper edge of flashing, for instance, is protected by house wrap or building paper, not installed over it.

2

## Flashing Applications

- ◇ Roof Flashing
- ◇ Wall Flashing
- ◇ Sill Flashing
- ◇ Roof Penetration Flashing
- ◇ Channel Flashing
- ◇ Through Wall Flashing
- ◇ Drip Edge Flashing
- ◇ Window Flashing
- ◇ Pipe Flashing
- ◇ Chimney Flashing
- ◇ Kickout Flashing
- ◇ Valley Flashing
- ◇ Step Flashing
- ◇ Counter Flashing
- ◇ Head Flashing
- ◇ Saddle Flashing

3


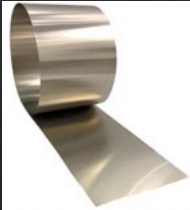


## Flashing Applications



4

## Flashing Materials

Metal Flashing

- ◇ Aluminum 
- ◇ Stainless steel 
- ◇ Copper 
- ◇ Galvanized steel 

5

## Flashing Materials

Flashing Membranes

- ◇ Rubberized asphalt (modified bitumen) 
- ◇ Acrylic 
- ◇ Butyl rubber 



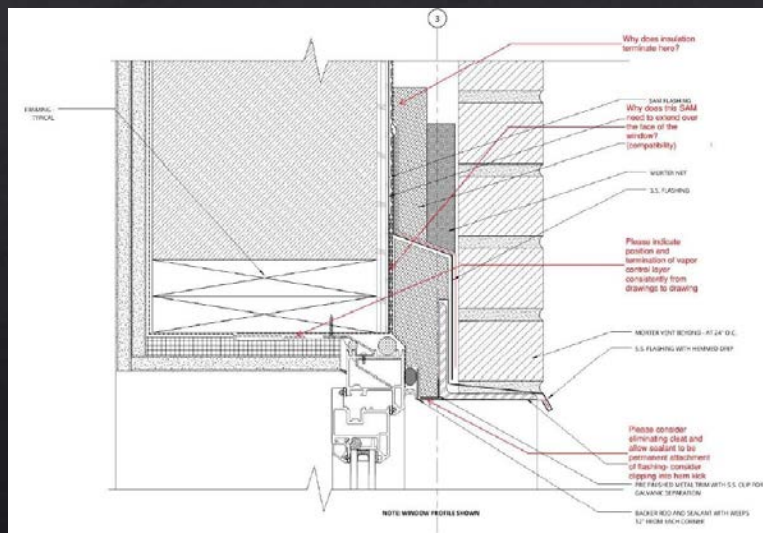
6

## What can go wrong?

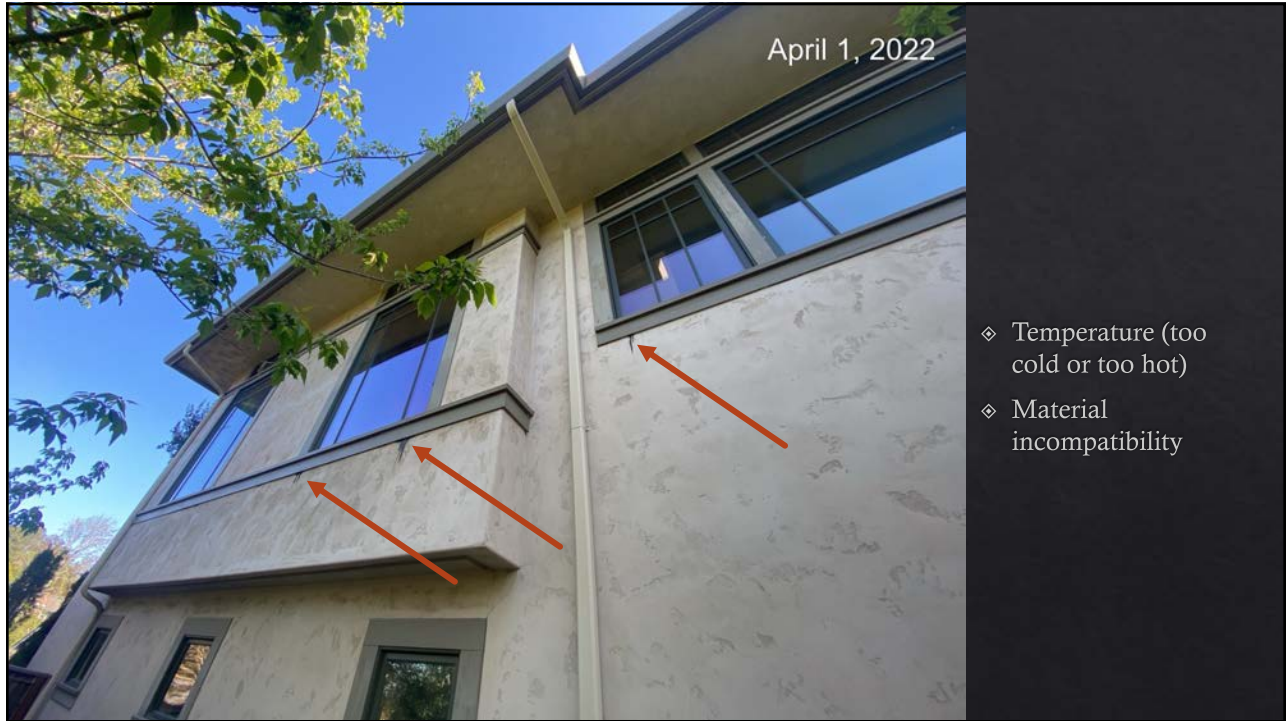
- ◇ Temperature (too cold or too hot)
- ◇ Lack thereof
- ◇ Substrate adhesion
- ◇ Slope
- ◇ Shingle principle
- ◇ Material compatibility
- ◇ Climate
- ◇ Lifespan & Maintenance
- ◇ Pressure
- ◇ Vapor Barriers (cold sided)

7

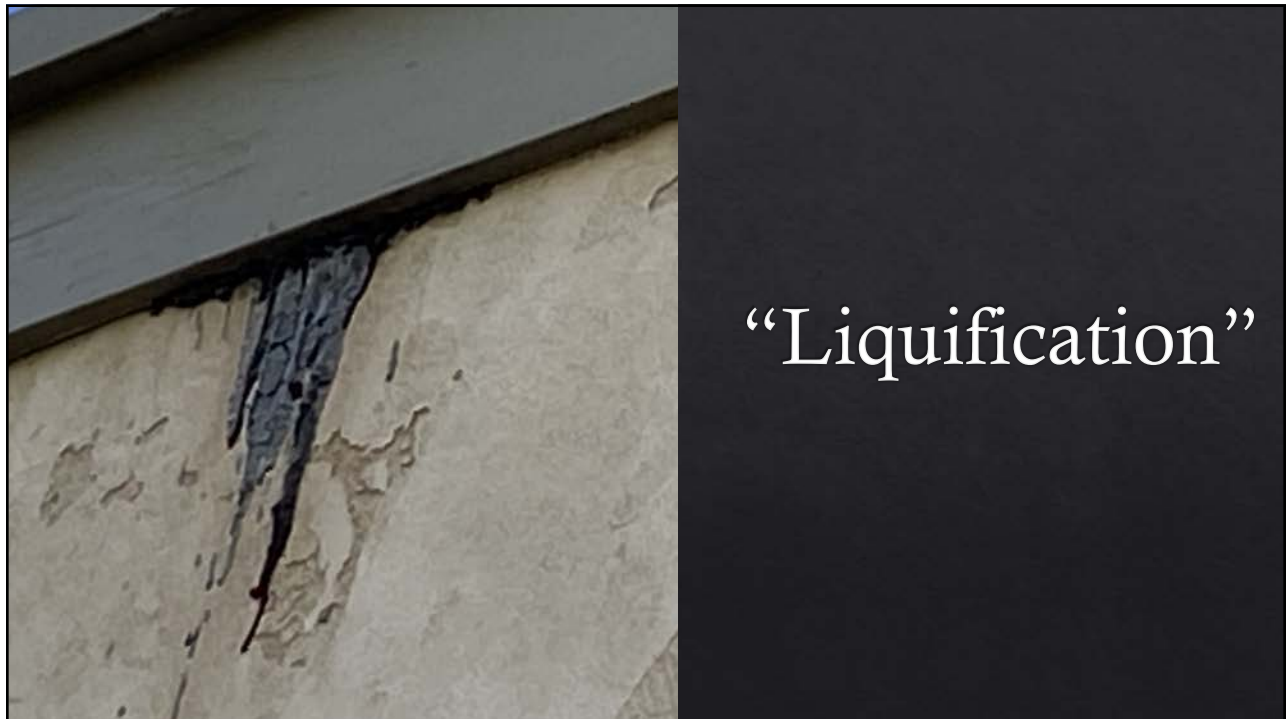
## Details



8



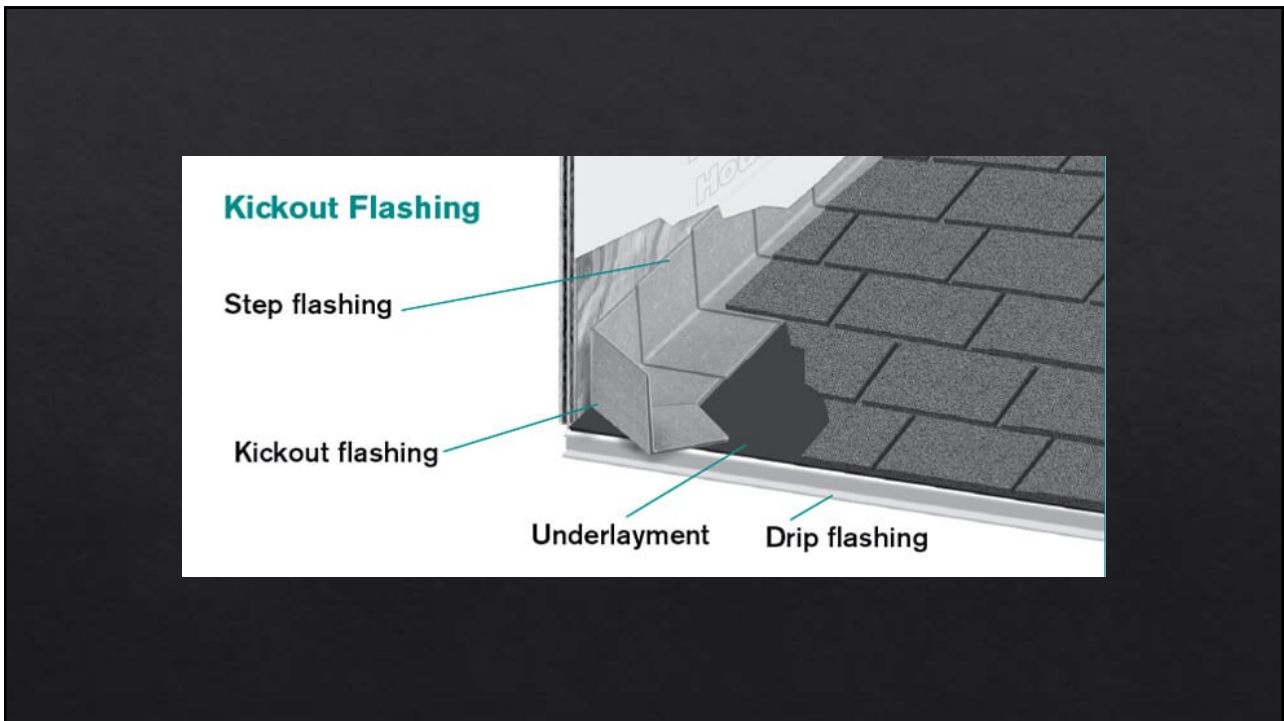
9



10



11

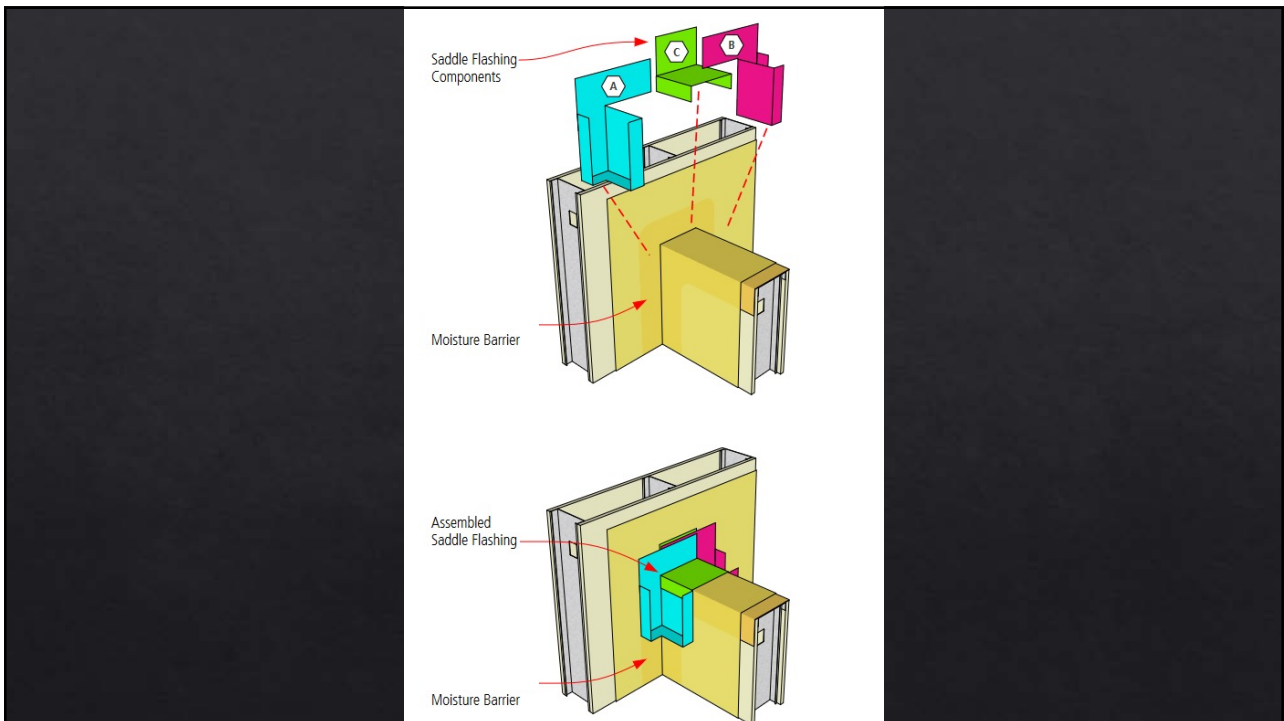


12



Lack of  
Saddle  
Flashing and  
Reverse Lap

13



14



Material incompatibility and/or lack of pressure applied while adhering the flashing membrane

15



◇ Material incompatibility and/or lack of pressure applied while adhering the flashing membrane

16





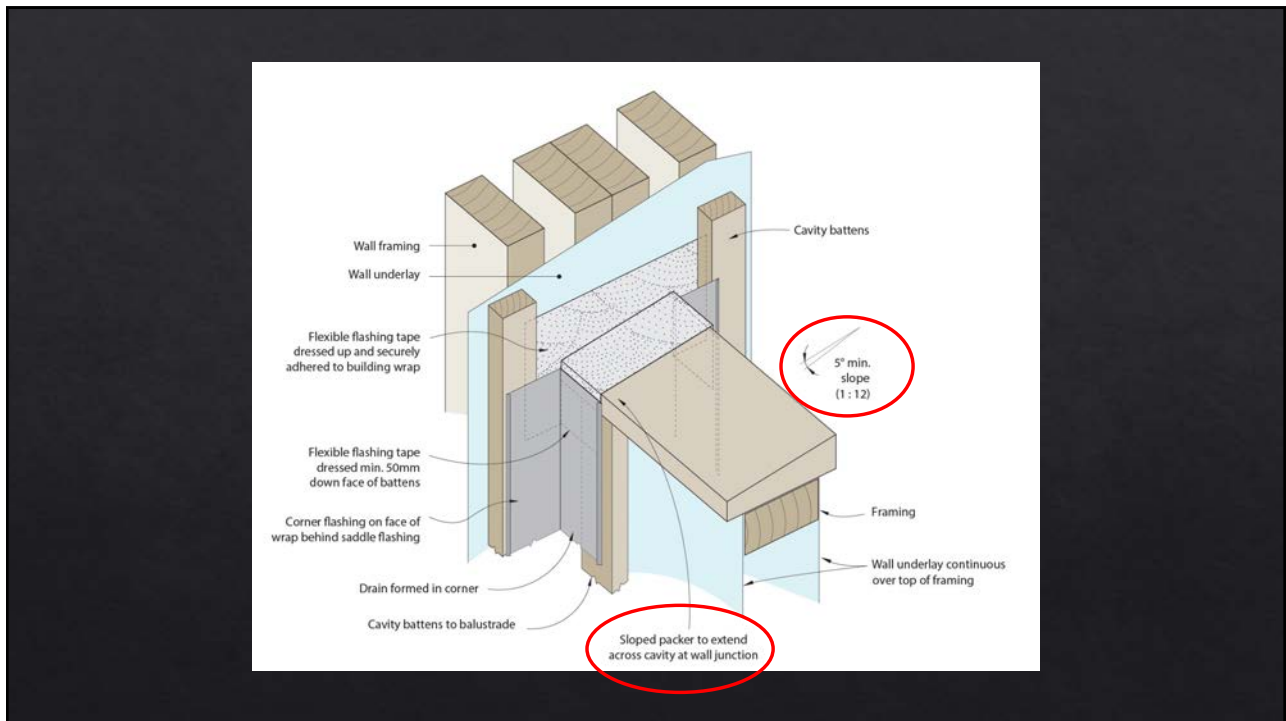
17



18



19

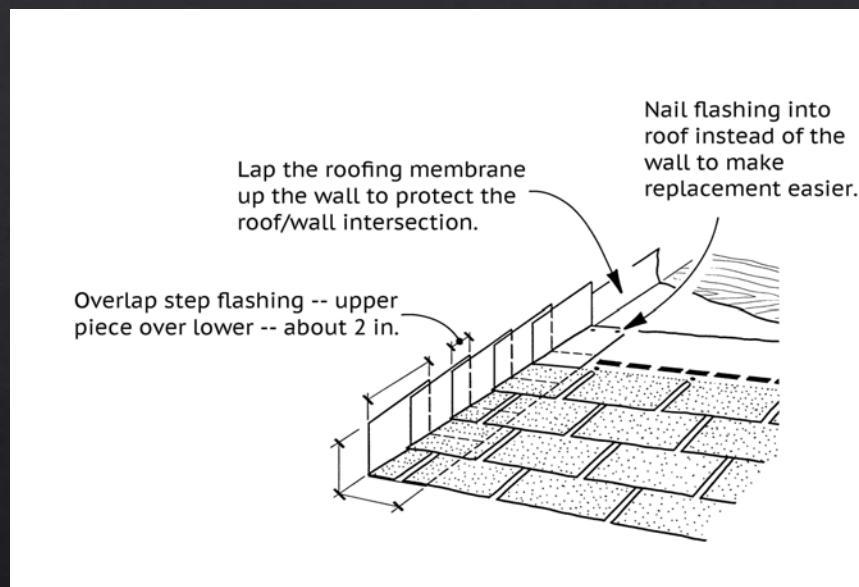


20

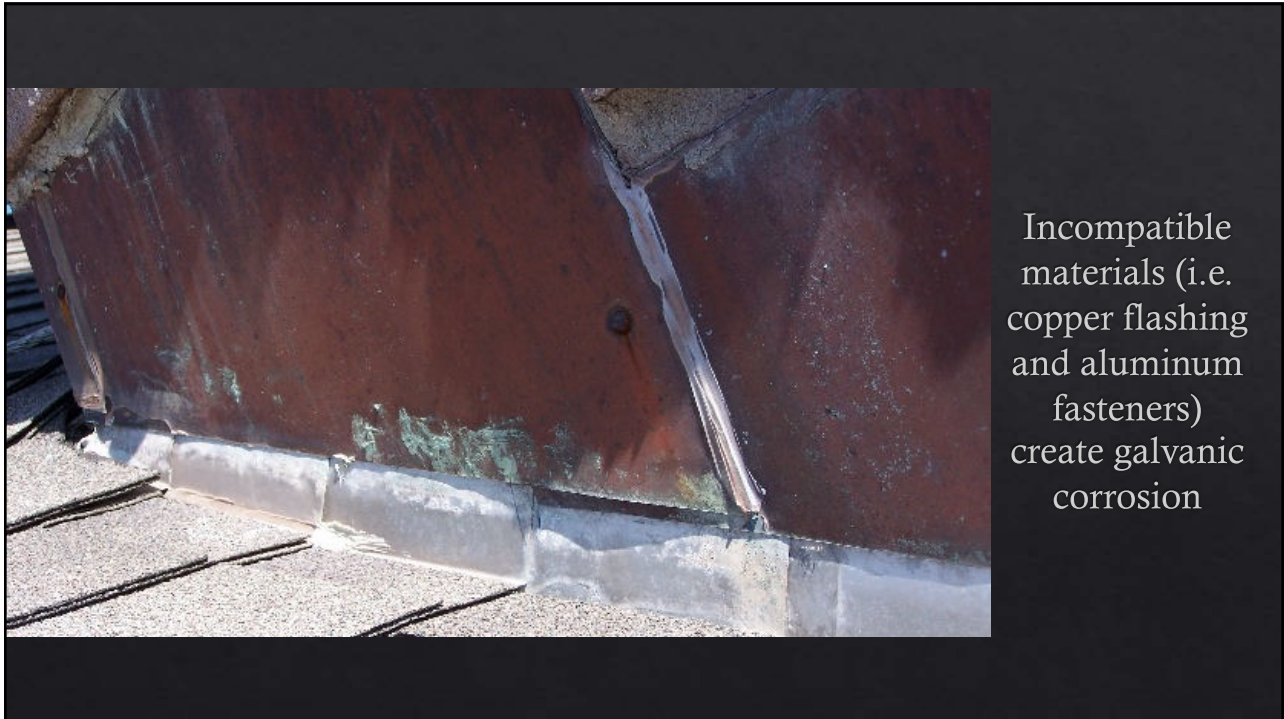


Reverse  
Sloped  
Flashing

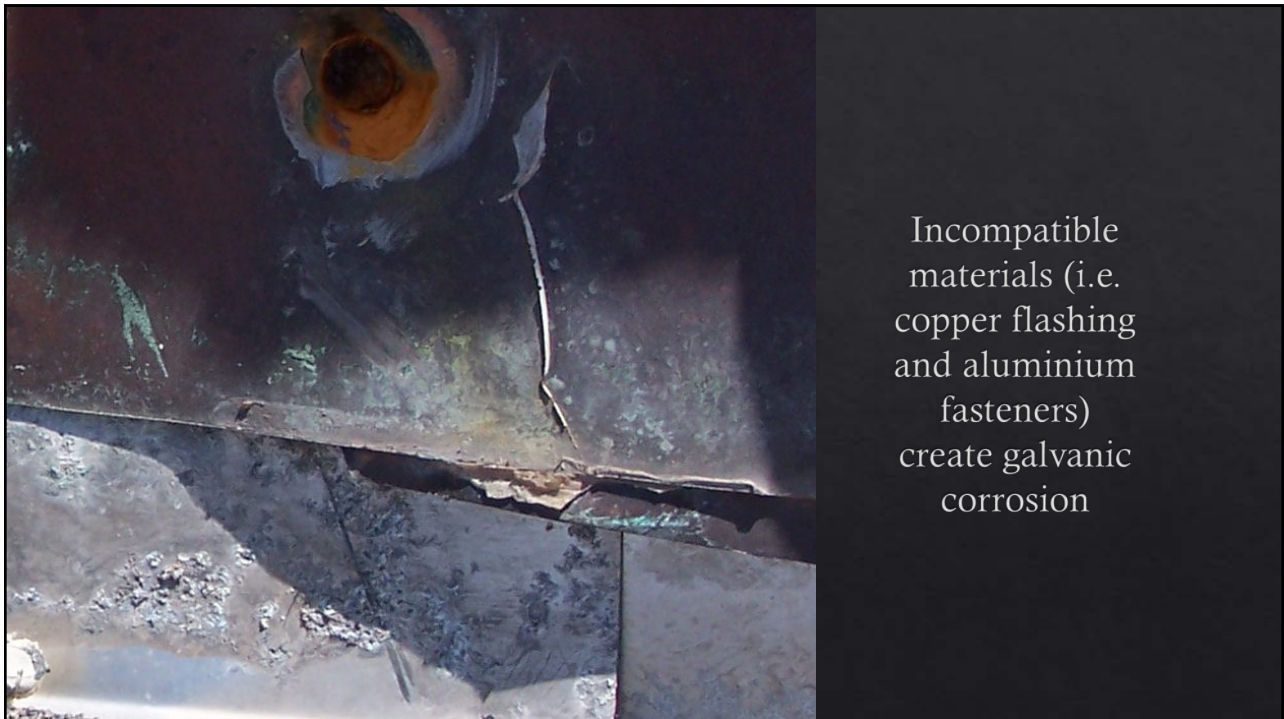
21



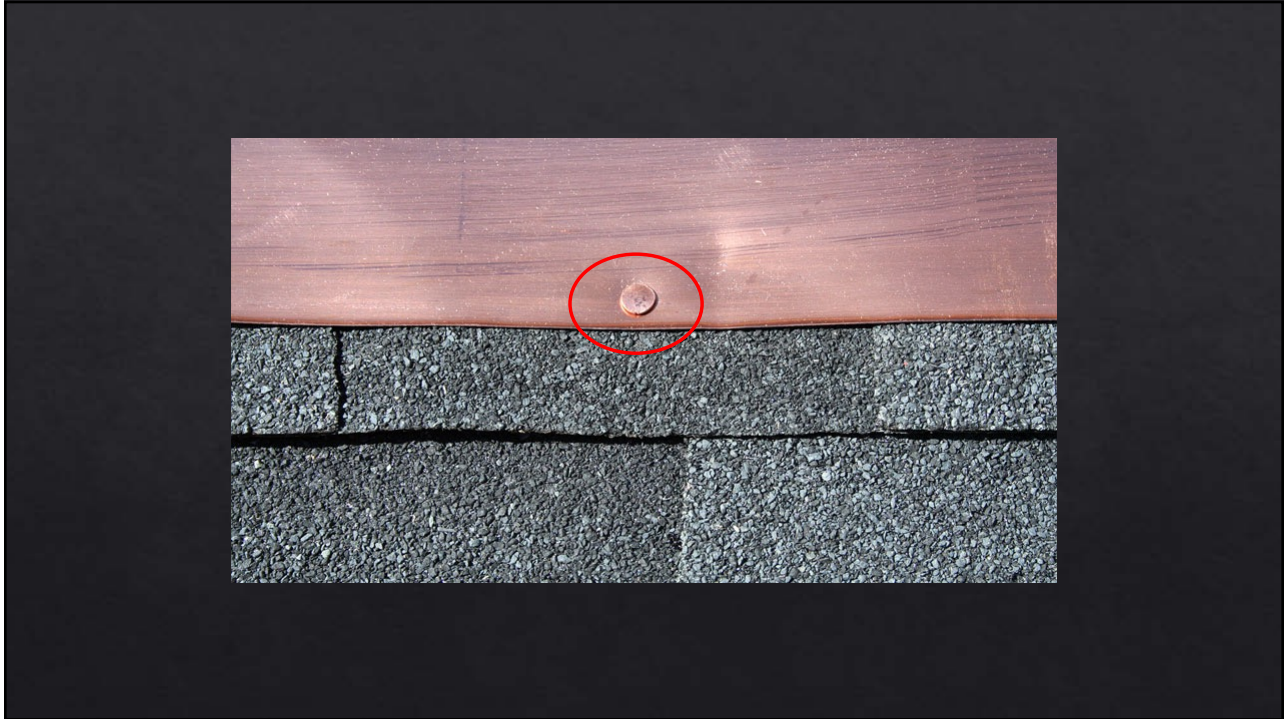
22



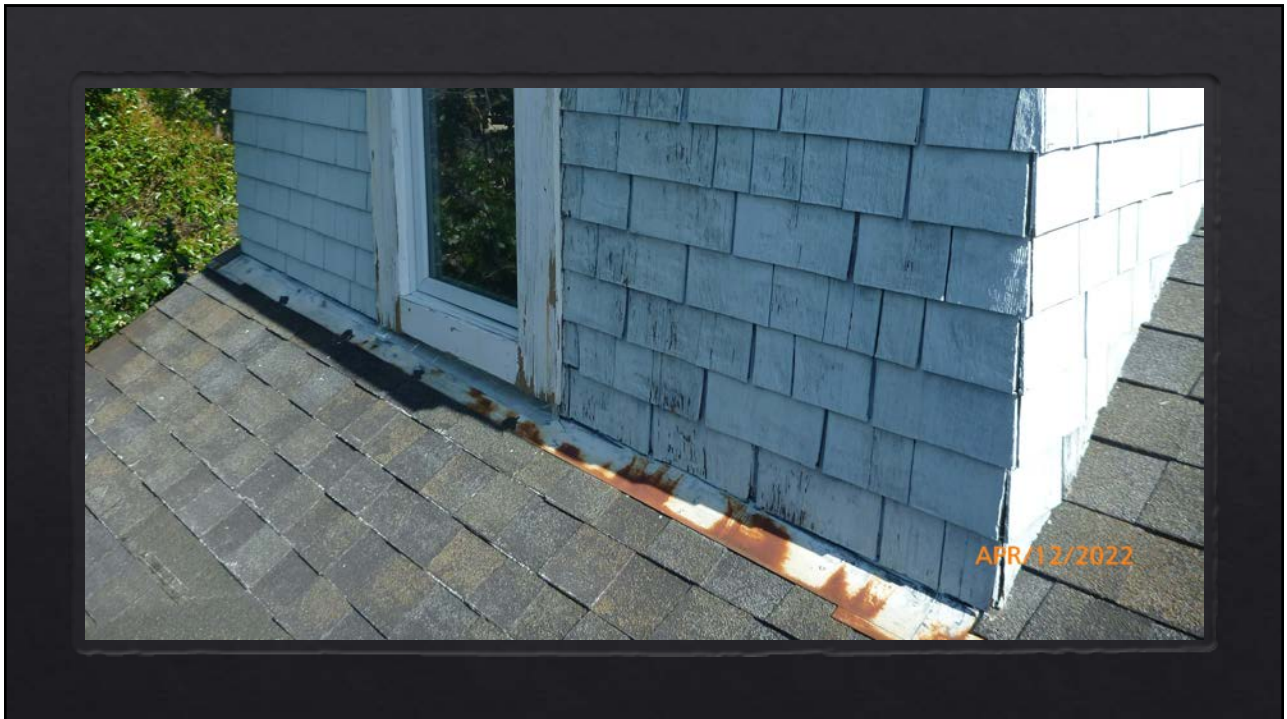
23



24



25



26



27



28



Thank you

AVELAR – Bill Weber GC,CR,CIEC,CMRS